



Avec le soutien de la Région de Bruxelles-Capitale
Met de steun van het Brussels Hoofdstedelijk Gewest



Market Report - United Kingdom

Observatory of Tourism in Brussels - 07/01/2015

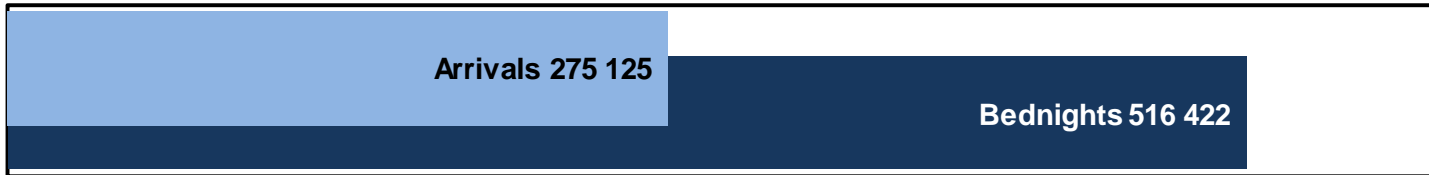
For questions, please contact :

Frédéric Cornet - +32 2 549 55 01 - f.cornet@visitbrussels.be

Charlotte Raymond - +32 2 548 04 66 - c.raymond@visitbrussels.be

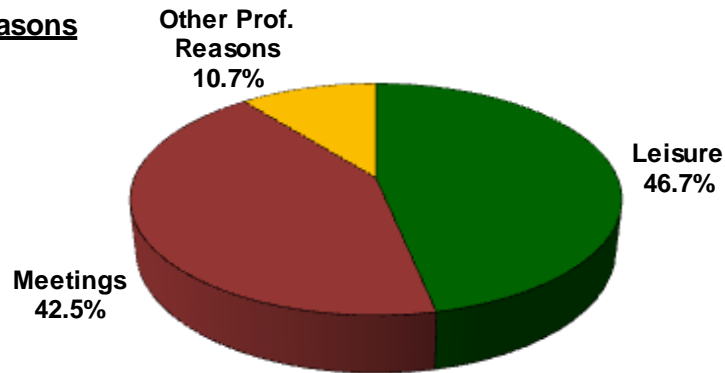
Tourism Overview 2013

Length of Stay (days)

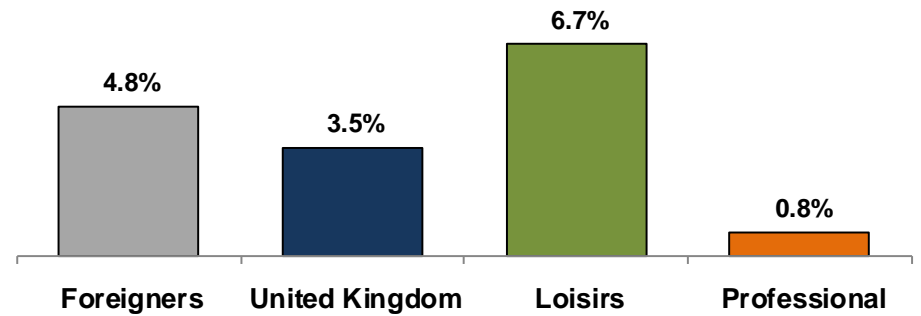


1.88

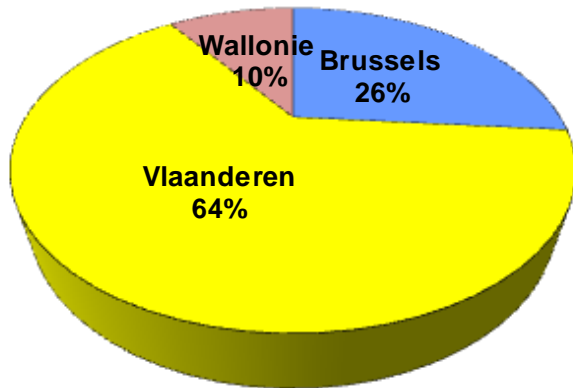
Reasons



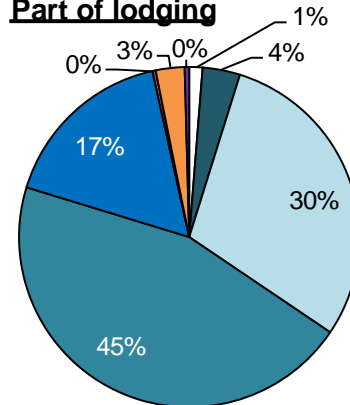
Bednights evolution vs. year before



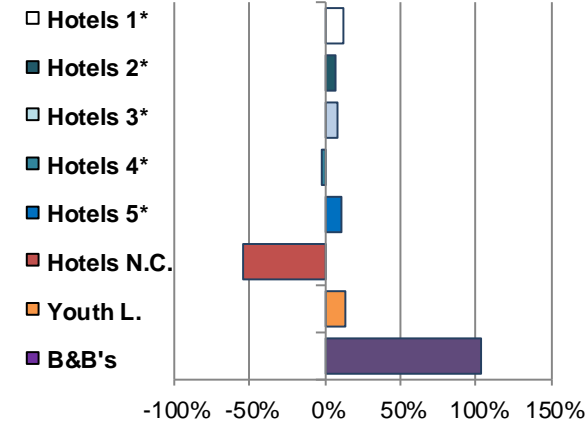
Bednights in Belgium



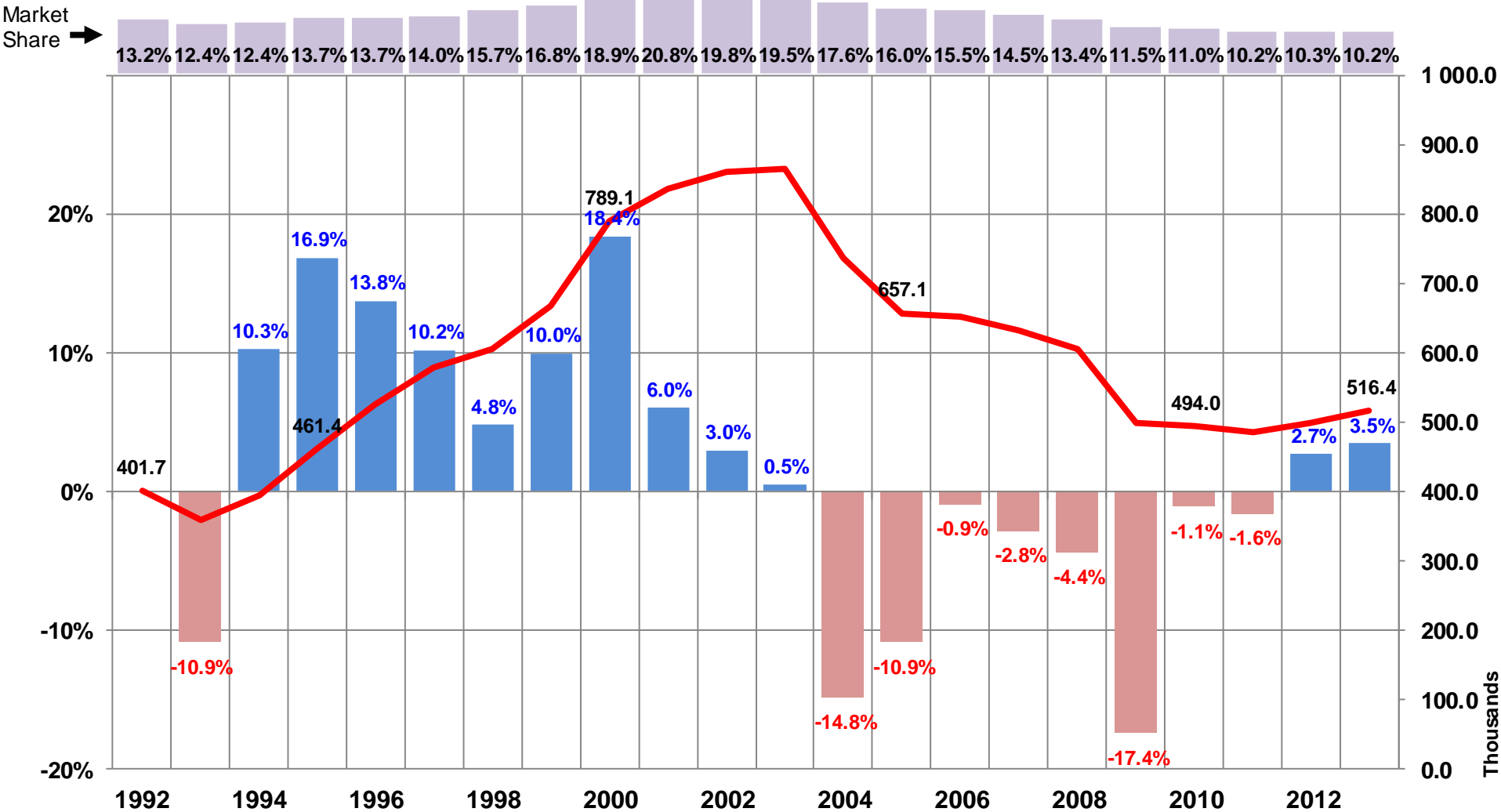
Part of lodging



Evolution 2013 vs 2012



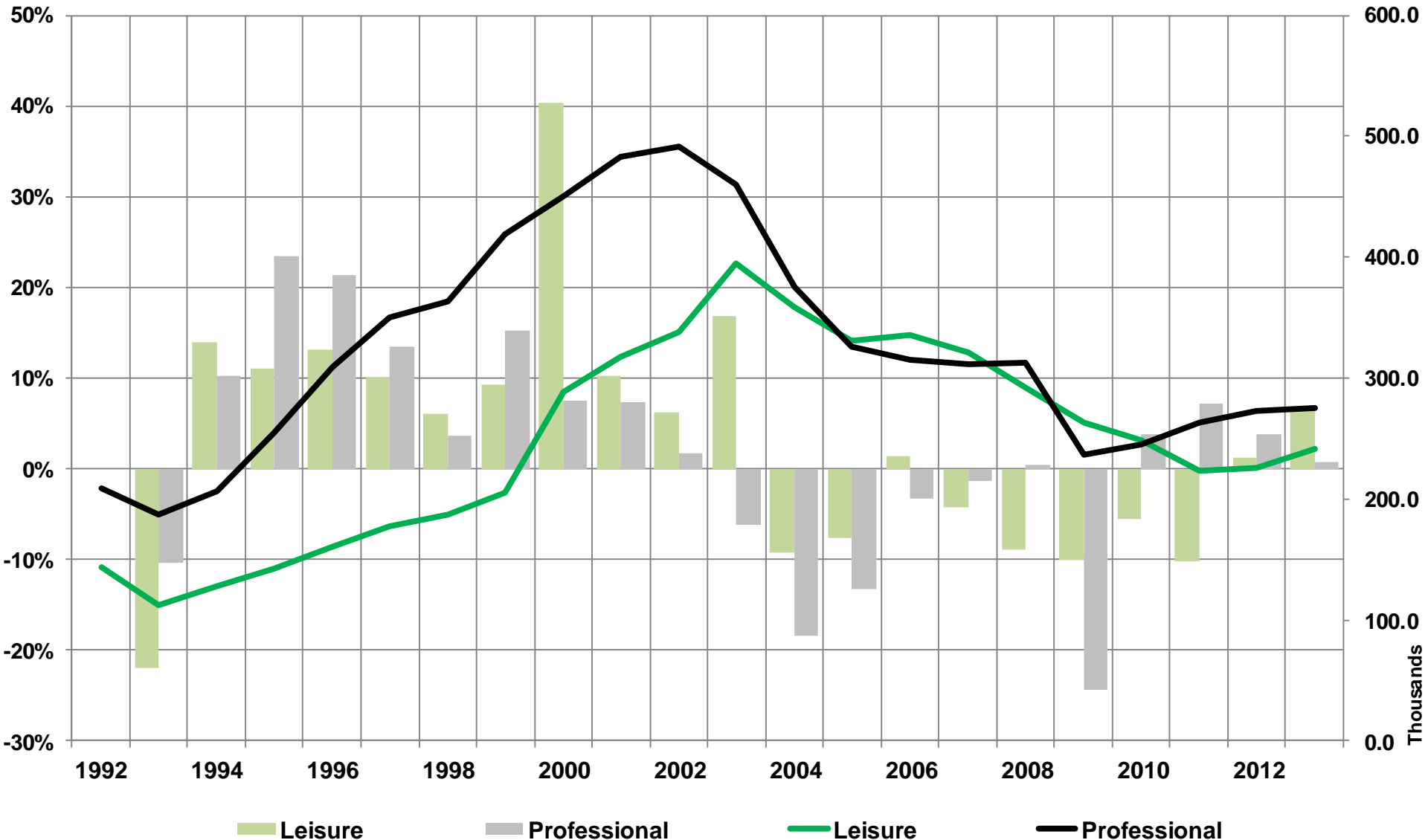
Long Term - Bednights by year & evolution YoY Market share in foreign markets



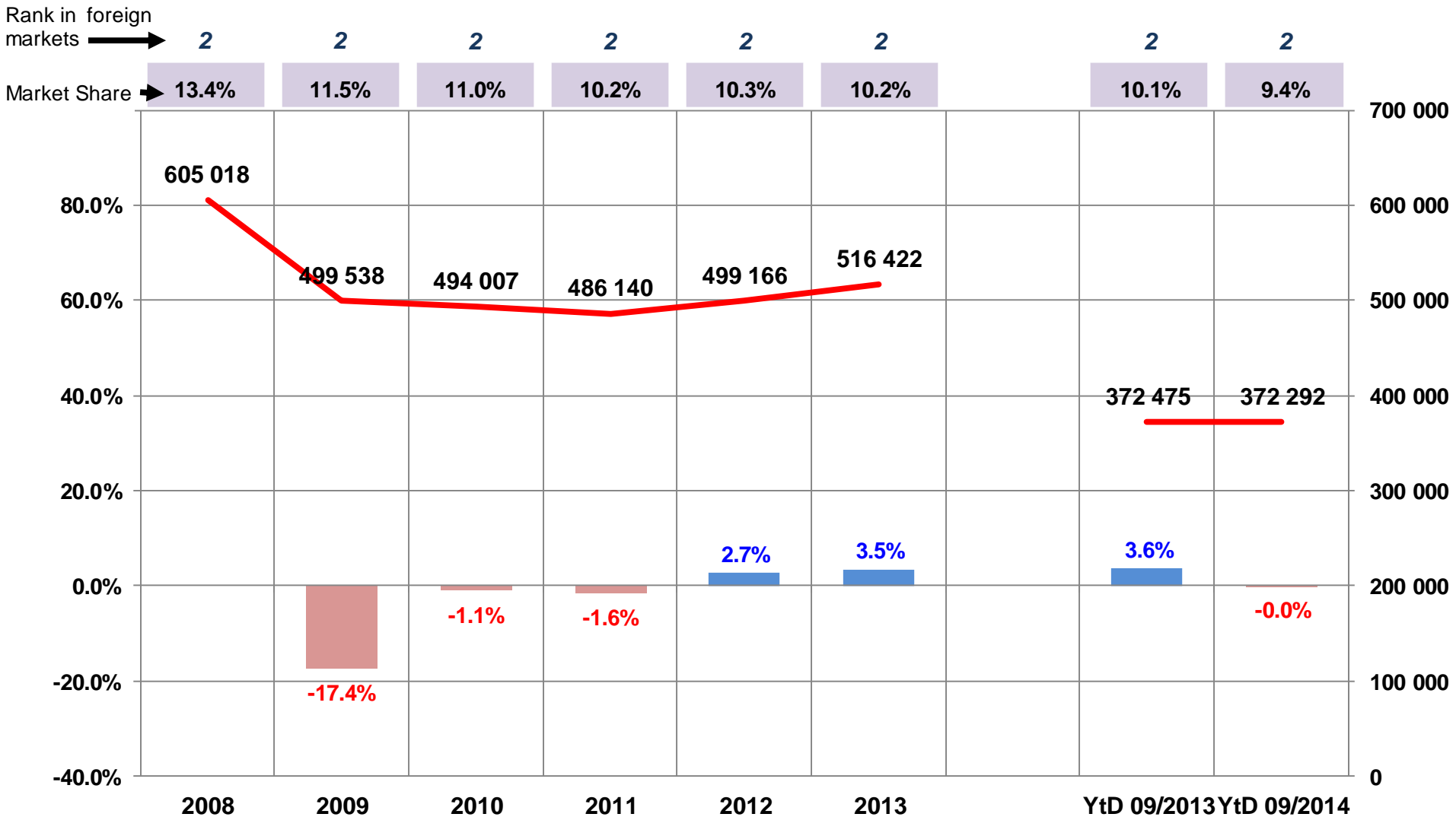
United Kingdom



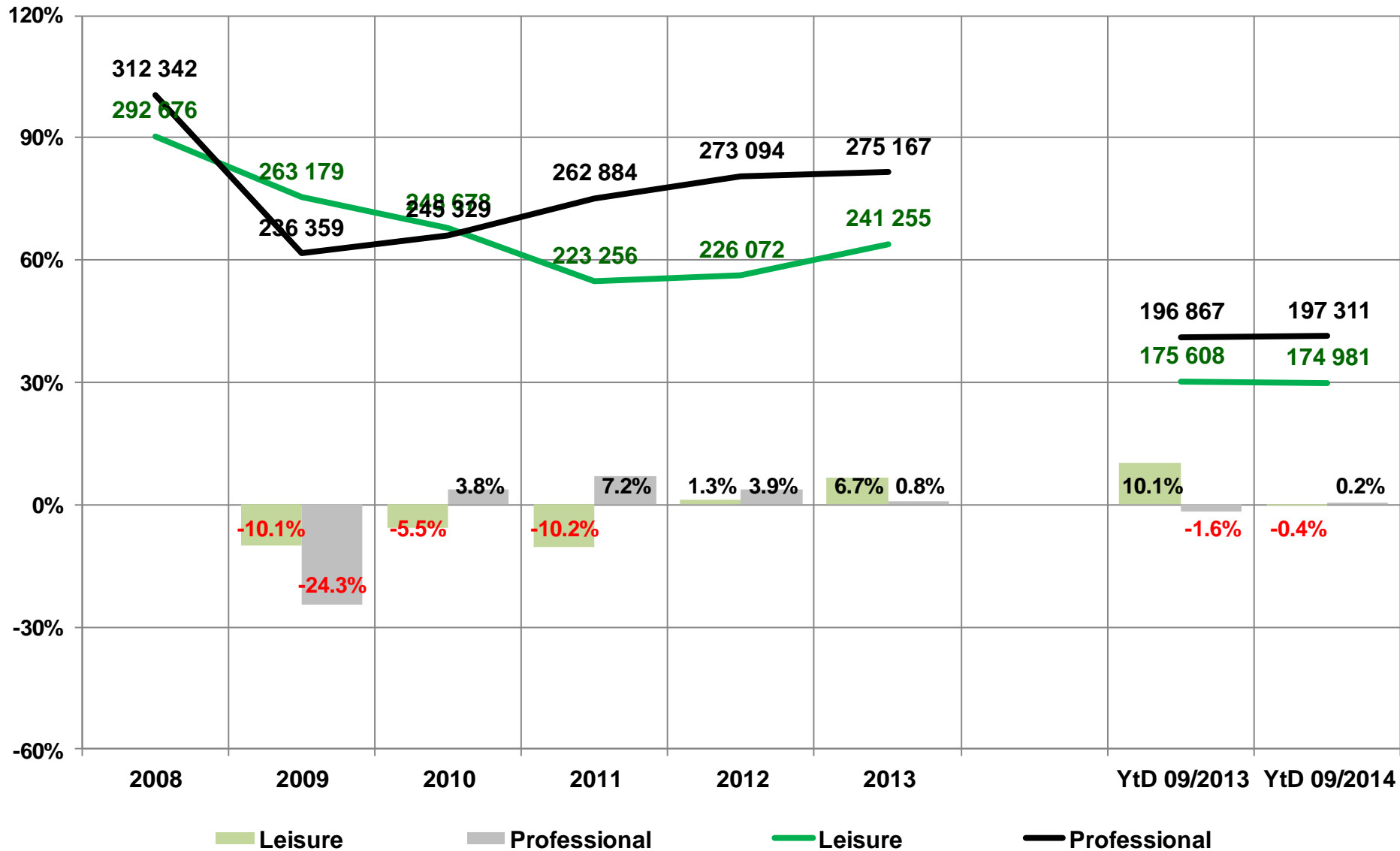
Long Term Bednights by reason & evolution YoY



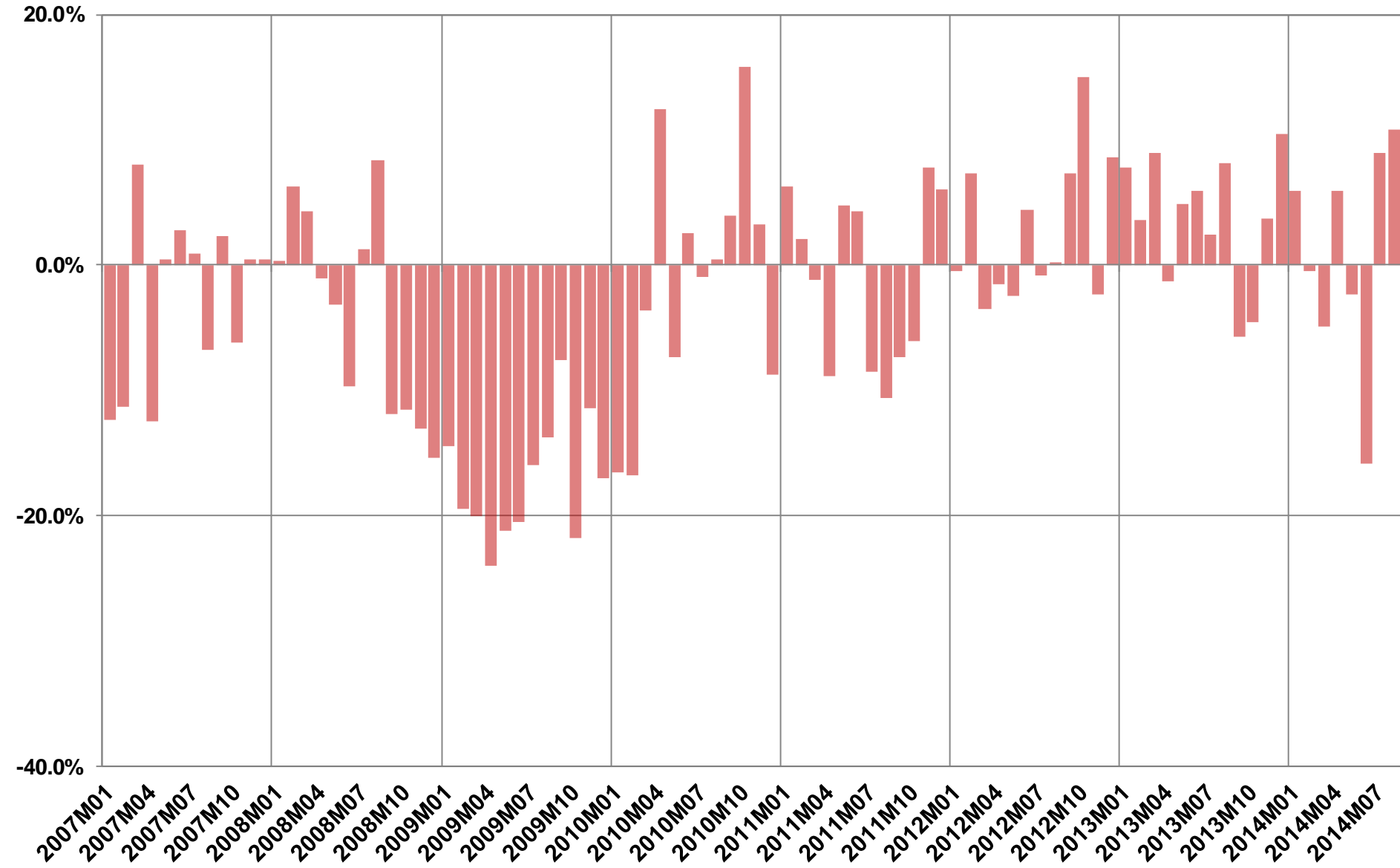
Bednights by year & evolution YoY Market share and rank in foreign markets



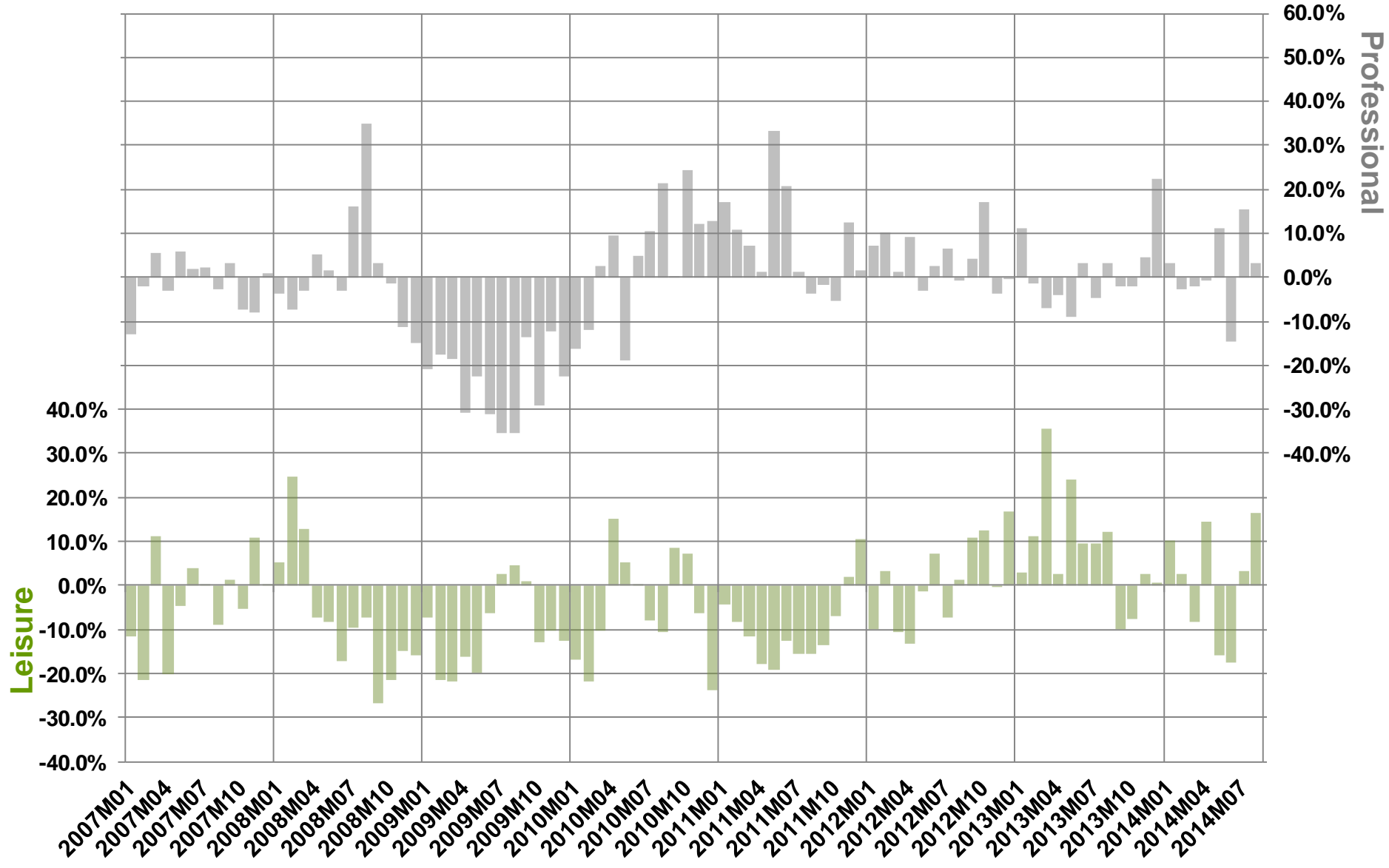
Bednights by reason & evolution YoY



Total Bednights Evolution Month over month



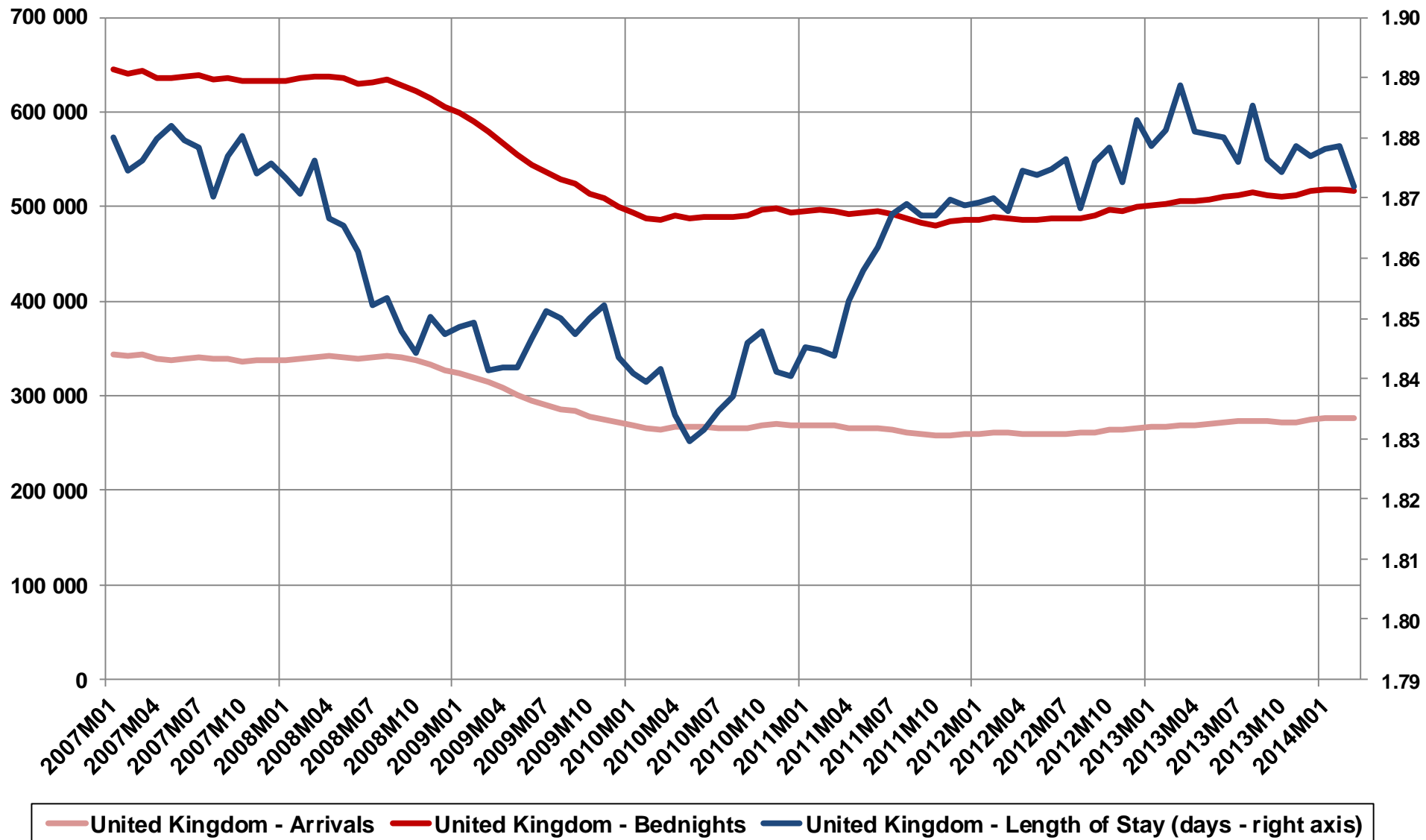
Bednights Evolution Month over month



United Kingdom



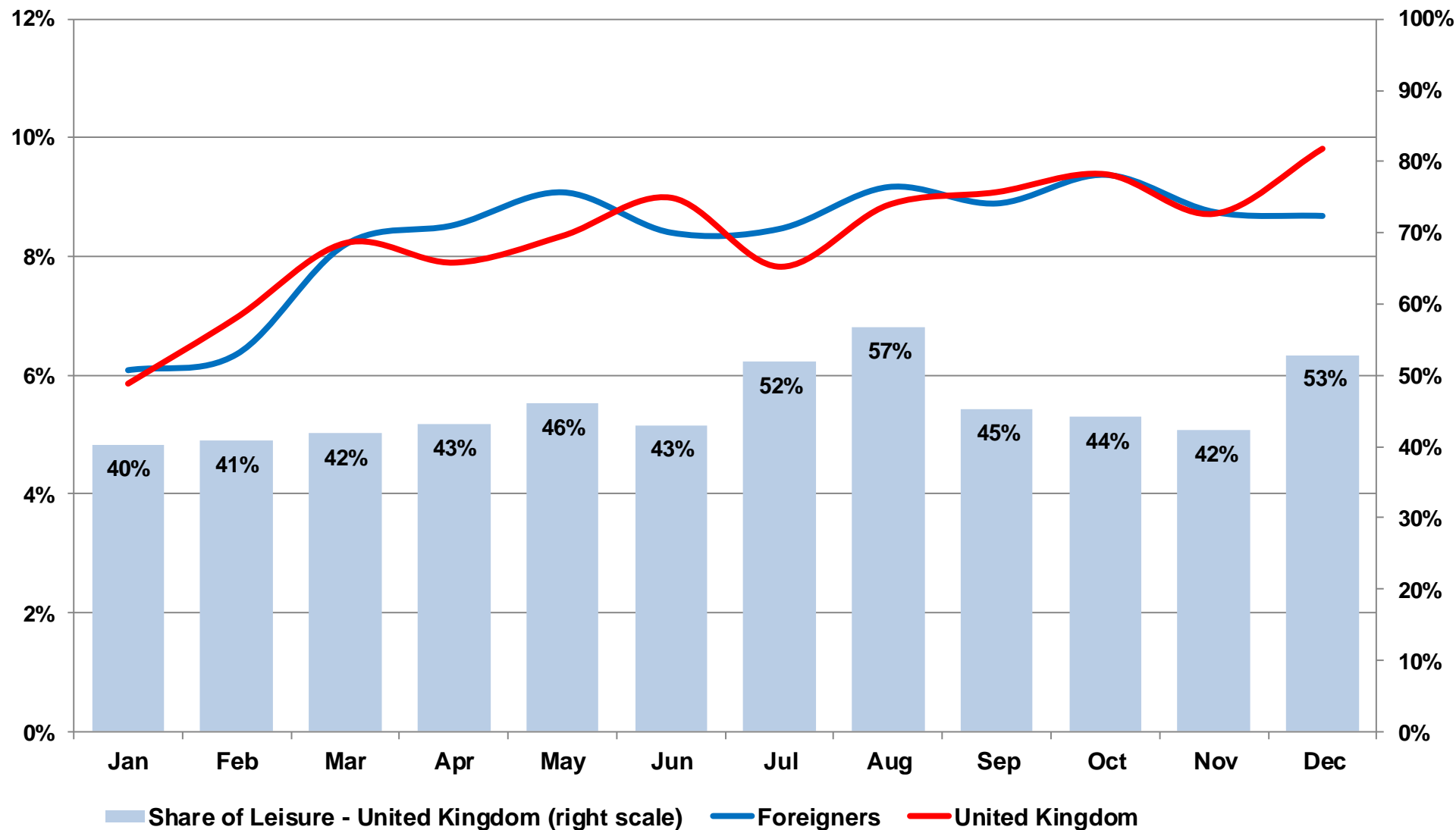
Arrivals/Bednights and Length of Stay - Moving Annual Totals



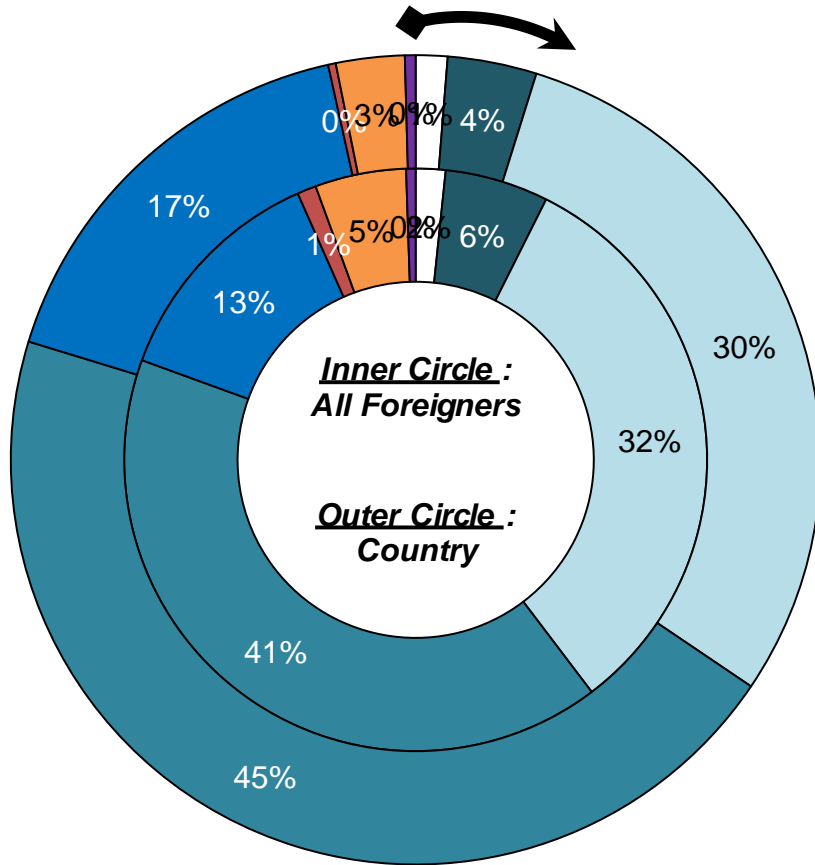
United Kingdom



Percentage of Bednights per month & Share of Leisure Average 2012-2013

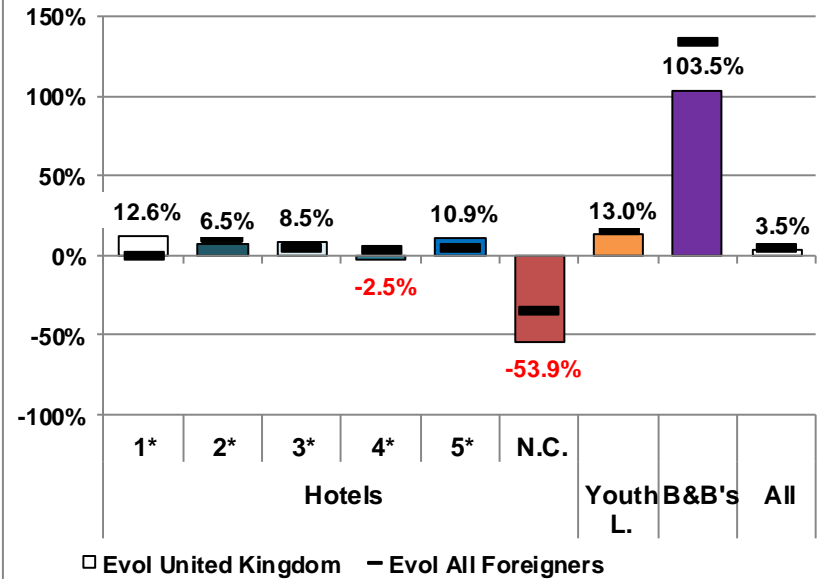


Overnights in the different lodging types - 2013



- Hotels 1*
- Hotels 2*
- Hotels 3*
- Hotels 4*
- Hotels 5*
- Hotels N.C.
- Youth L.
- B&B's

Evolution 2013 vs. 2012



Leisure & Prof. Overnights by lodging type

